



Chalk White
3.27



Deep White
2.01



Oatmeal
1.17



Clay
2.08



Yellow Sand
2.07



Dover Beige
2.18



Moonstone
3.10



Stone White
3.07



Apollo
3.13



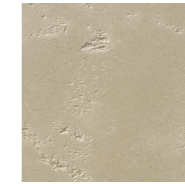
Clifftop Sand
1.04



Desert Stone
3.15



Tea Dark
3.05



Tea
3.04



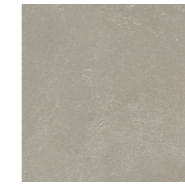
Craigs Stone
3.12



River Stone
3.20



Lichen Stone
3.06



Olive Green
3.17



Helens Brown
1.02



Pahia Sand
2.03



Sand
2.17



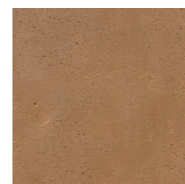
Hay White
1.08



Ochre
2.06



Desert Ochre
2.15



Desert Orange
1.05



Dark Ochre
2.14



Pale Brick
1.16



Central
3.02



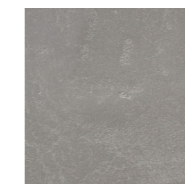
Oyster
3.09



Pearl Grey
3.11



Shell Grey
3.14



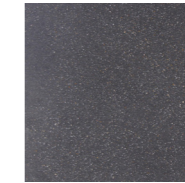
Just Grey
3.26



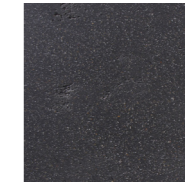
Denises Grey
3.24



Deep Grey
3.19



Grey Black
3.28



Just Black
3.21

Colour Variations

Quarter, Half, Double and Triple colour shades are available on request of all colours within the range.

Printed colours may differ to actual samples, use as a reference guide only. Please obtain a sample of the product before making a final selection.

Colour Accuracy

When specifying colours please note:

- Within a single colour, you will naturally achieve “colour shading” which enhances the depth of the finish. This is more noticeable in darker colours.
- The grade of polish can influence colour strength. A higher grade of polishing deepens and enriches the colour appearance, where a matte finish softens it.
- Dark colours are best polished and sealed to achieve significant colour depth.
- When a clear sealer is required for protection on joinery or from moisture in bathrooms, this may darken the tone by a 1/4 shade therefore important to keep in mind when creating a seamless look with walls and joinery.
- The final finish whether matte, high gloss, sealed or natural is hard wearing and easy to maintain. You can find our Care Guide on our website.

Limitations in Colour Matching to Paint Colours.

Ambitec Polished Plaster has limitations in its ability to achieve a perfect match to paint. This is influenced by;

- the composition of Ambitec polished plasters in which there are small white marble particles that cannot be tinted to become part of the colour impression and light diffraction. This becomes more noticeable in darker colours.
- The colourants used in the tinting process are different to those used by paint manufacturers and therefore change the colours in a unique way.
- Also influencing colour appearance are the different polishing levels and the various surface sealers which darken the colour in different ways.

Rather than trying to match an Ambitec plaster finish to paint, we recommend selecting a colour from our range first and finding a paint match thereafter. When looking to match an existing paint colour, due to the above limitations, we suggest finding a colour that is complementary instead.

SuaveStone Polished Plaster Colour Range

